

Market Solutions for Reducing Illegal Gold in the Gold Supply Chain

What is the RGPP?

It is a “sunshine tool” created to help gold buyers anywhere in the world assess and reduce risk of purchasing illegal from Brazil – readily available, quick and low cost, thus reducing the entrance of illegal gold in the supply chain (in a “heated gold” status) and the associated negative social and environmental impacts.

What does RGPP mean?

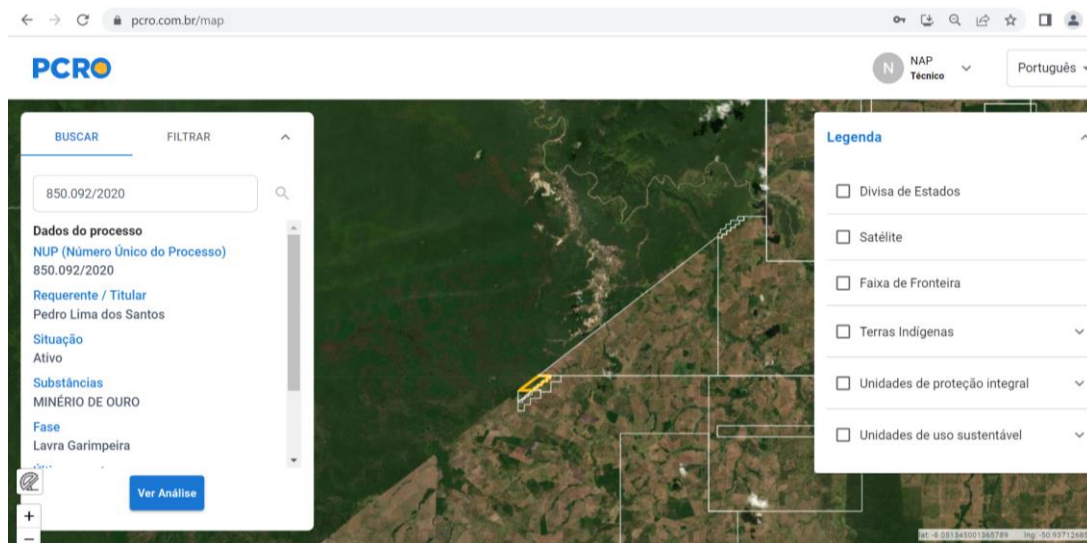
Responsible Gold Purchasing Procedure (RGPP)

How does the RGPP work?

It is a platform whereby a gold buyer may place the number of the mine where a mining company or an ASGM miner is producing gold (all legal producers of gold in Brazil must have this number), in order to carry out a risk assessment based on public data and satellite images (updated every 15 days). Based on the number of the mine, the system will plot the area and carry out three levels on analysis, being that the first one is automatized and rules out major risks such as impact inside indigenous lands or conservation units within seconds.

How do I access the RGPP?

The RGPP is available as a website, in English and Portuguese, that anyone can access via the World Wide Web. Visit www.pcro.com.br



Who developed the RGPP?

The RGPP pilot program was financed by WWF UK in partnership with the University of São Paulo, School of Mining Engineering, at a unit specialized in ASGM, with the support of Igarapé Institute. The first version was tested with public and private stakeholders in Brazil (gold buyers/DTVMs, jewelers, miners, public ministry, etc.) and a second version, more user friendly and with new tiers of analysis is available.

Are there other uses for the RGPP?

During trials, it was identified that the RGPP is useful also to miners who are trying to be fully compliant with the legislation and adopt responsible practices. Because it allows such quick

visualization of the status of the mine, it works as a self-due diligence tool, revealing they are late with legal requirements and if they could gain more points in level 3 by adopting new practices. Also, governmental agencies that carry out monitoring found the RGPP useful, because it allows them to quickly identify mines in risk situations or with irregularities (satellite images can be used as evidence for “ghost mines”, going overboard licensed areas, etc.) Given how expensive it is to physically monitor mines in the Amazon, this tool also lowers costs of monitoring, command and control.

In what consists levels 1, 2 and 3 of analysis?

Level 1 rules out major environmental and social risk, based on public data, in an automatic mode (results in seconds). Level 2 requires human analysis, thus it may take a few hours for results to come out. Level 3 relies on further data to be submitted by the miners and, thus, may take a few days to come out. All levels give out a clear assessment and a dated report with the reasons for the system recommending or not the purchase of gold from that mine.

How much does it cost to use de RGPP?

The RGPP was developed to be used freely by anyone in the world, even though there are similar tools para operate on a commercial basis being used by the mining sector. The aim of the RGPP is to reduce the entrance of illegal gold in the legal gold supply chain, reducing the field of illegal mining. However, there is a maintenance cost to operate the RGPP, maintain the platform running and technical staff to carry out analysis of Level 2 and 3. The business model is currently being defined, but it may run on a “pay per use” system or “monthly fee” or with support from government (being made available free for all).

Can the RGPP be expanded to other metals?

Yes, it can easily the expanded to include other metals produced in Brazil.

Can the RGPP be expanded to other countries?

Yes, it can be expanded to other countries, but it will require adjustments because legal requirements and the data available vary. Also, translation is necessary.

Is the RGPP a certification?

No, it is not a certification. It is a risk assessment tool, displaying public information in a didactic way (sunshine too) to help solve a critical problem that Brazilian society is facing. There are no standards, no auditors, no cost associated, as certification schemes.

How do I get a username and password?

Interested stakeholders may reach to us and we will provide a username and password, so you may navigate the RGPP.